



Developer Manual

Version 9.0
June 2005

This publication contains proprietary information of Card Scanning Solution Company, supplied for customer use only. No other uses are authorized without the express written permission of Card Scanning Solution Company.

General

Warranty

Card Scanning Solution Company provides this publication “as is” without warranty of any kind, either express or implied, including, but not limited to, the implied warranties of merchantability or fitness for any particular purpose.

Further, Card Scanning Solution Company reserves the right to revise this publication and to make changes in the content hereof from time to time, without any obligation on the part of Card Scanning Solution Company to notify any person of such revision or changes. Some countries or states in the USA do not allow a disclaimer of express or implied warranties in certain transactions; therefore, this statement may not apply to you.

This publication may include technical inaccuracies or typographical errors. Changes are periodically made in the information herein; these changes will be incorporated in new editions of the publication. Card Scanning Solution Company may make improvements and/or changes in the products and/or the software described in this publication at any time.

Notice to the Developer

This manual should not be construed as any representation or warranty with respect to the software named herein. Occasionally, changes or variations exist in the software that is not reflected in the manual. Generally, if such changes or variations are known to exist and to affect the product significantly, a release note or “read me” file accompanies the manual and/or the distributed software. In that event, be sure to read the release note or “read me” file before using the product.

Trademarks

The trademarks IBM and IBM PC are registered trademarks and PS/2 and AT are trademarks of International Business Machines Corporation. Intel and Pentium are registered trademarks of Intel Corporation. All other trademarks are the property of their respective holders and are hereby acknowledged.

Publication

The descriptions, specifications, design and procedures contained in this manual were effective at the time of publication of this manual. Card Scanning Solution Company reserves the right to modify any of the above at any time without notice and without incurring obligations.

Table of Contents

General	2
Warranty	2
Notice to the Developer	2
Trademarks	2
Publication	2
Table of Contents	3
Introduction	4
Administration Mode	5
Minimum Interface Mode.....	7
Parent Application mode.....	8
IdScan INI file fields description.....	9
Section Name: AppData	9

Introduction

IdScan contains many hidden options to suit variety of working modes. Some of these options are invoked using special command line parameters and some by changing the default values in the application configuration file. Triggering these options modify the main application GUI, expose hidden configuration screens, activates system tray icon and even cause idScan to interact with other current running applications in Windows.

The following summaries the different hidden options:

Location	Activations	Modification description
Command line switches	/A	Running in Administration mode
	/MI	Running in minimum GUI interface
	/ParentApp:	Changing focus to another application after idScan loads
	/NOMAG	Disable the search for the SwipeShell900 magnetic reader. This speeds up the application load considerably.
Options in IdScanOCR.INI file	Show Minimized	Running in hidden mode
	App Title	Change the application title
	BypassUserCalibration	Prevent future request for calibration
	Hide scan progress	Hide scan progress dialog
	WebLink	Modify web link in the help dialog
	TrayIcon	Show application icon in the System Tray
	use splash	Show\Hide splash screen when the application invokes
Deactivate Dialogs	Prevent question dialogs from showing	

Note: You may use several switches in the command line as follows:

IdScan.exe /A /MI /ParentApp:MyApp

Administration Mode

Running the application in Administration mode shows a new tab in the configuration screen. This tab allows you to disable the splash screen and to disable all message boxes in the application. To activate the application in Administration mode, use /A switch. The Automation tab offers developers that wish to use *idScan* for kiosk applications full automation of the user interface by eliminating the use of dialog boxes in the application, thus releasing the user from using keyboard and mouse.

To use this option, open the configuration dialog and click on the ADMINISTRATION tab.

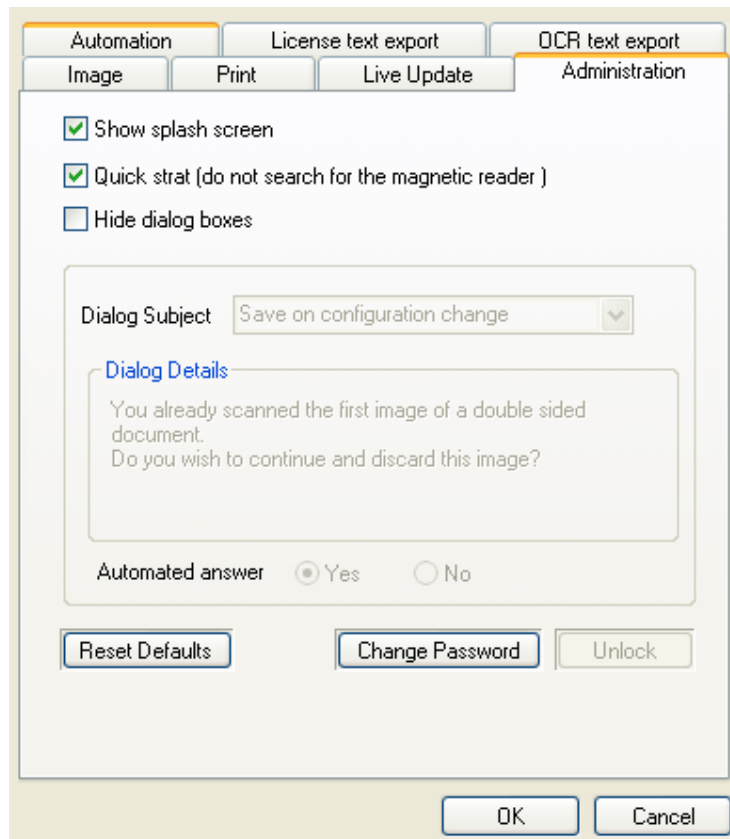


Figure 1: Scanner Configuration - Administration

Unlock: Changing the default application behavior is not available to the regular user and is protected by password. To unlock the Administration tab, type the default password: *CSSN*.

Show Splash Screen: This checkbox controls the appearance of the splash screen when the program is invoked. Unchecking it prevents the splash screen from showing.

Quick Start: If this box is checked, the program will skip the check for the magnetic reader, which will speed up the program start up by about 10 seconds.

Hide Dialog Boxes: Checking this checkbox deactivates the dialog box mechanism. Dialog boxes are used for two reasons:

- **Information dialog boxes:** These dialog boxes inform the user of specific events and show a single OK button to close the dialog.
- **Decision dialog boxes:** Two dialog boxes require a user decision on how to proceed in a questionable situation. To relieve the user from making this decision, each dialog has a pre-defined choice. To modify this choice, read the *Dialog Detail* data and set the proper selection by setting the *Default Selection* radio button.

Change password: Click this button to set a new password instead of CSSN. If you leave the new password empty, no password protection will be used and any user could modify this dialog.

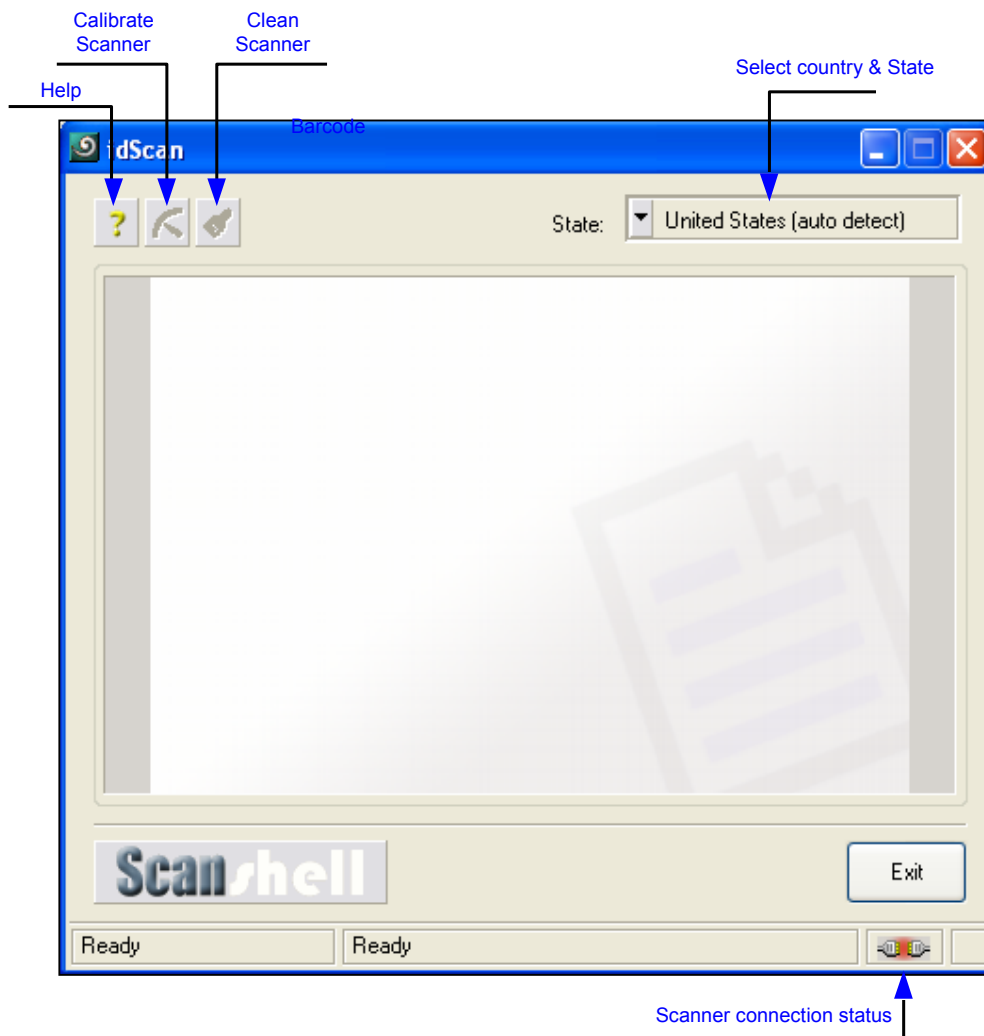
Reset Defaults: Clicking on this button resets the default settings (use splash screen and show dialog boxes) and resets the password to CSSN.

IdScan supports an additional important administration feature: it allows running the application in hidden mode. This feature cannot be set from the dialog box. To find out more about this feature, see the "[Show Minimized](#)" option.

Minimum Interface Mode

The minimum interface mode is suitable to administrators that want their users to operate the software with minimum possibilities. In this mode the user can only scan, calibrate and clean the scanner. All other buttons are removed from the application interface and its configuration can not be altered from the main interface.

When running the application in Minimum Interface mode the application main screen looks as follows:



To activate this mode run the program with the switch /MI.

Parent Application mode

Running idScan in this mode force idScan to give the focus to another application after it finish to invoke. This is useful when running idScan with a main application that use idScan to scan cards. With this option the main application maintain the focus after idScan invokes. To use this option, submit the application title¹ to *ParentApp* switch. E.g., if the main application has the title *MyApp*, then to return the focus to that application activate *idScan* as follows:

IdScan.exe /ParentApp:MyApp

Note : Make sure to have no space between the switch and the application name.

If the application title contains spaces, make sure to put double quotes around it:

IdSca.exe /ParentApp:"MyApp – Untitled.txt"

¹ Application title: The text that shows in the application top system title.

IdScan INI file fields description

Field Name	Values	Description
Section Name: AppData		
License	16 chars	License key to activate the application
Version	x.x.x	The application version number
<u>VerifyCard</u>	0-1	Card verification activation. For more information on <i>Card Verification</i> please refer to IdScan manual.
TrayIcon	0-1	Setting this flag show an icon on the System Tray area. This mode gives access to the application when running in hidden mode (see <i>Show Minimized</i> flag).
Toolbar	0-1	Display the application as a floating toolbar (1) or in regular screen mode (0).
App Title	String	Set the application title
Show Minimized	0-1	Setting this flag hide the application main screen and remove its icon from the task tray. This option is useful when using IdScan in the background while another main application is using IdScan processing result files.
BypassUserCalibration	0-1	Setting this flag discard the need for calibration even if the calibration files needs to be updated. This is useful when working in kiosk mode.
Hide scan progress	0-1	Setting this flag hide the scan progress dialog .
WebLink	link	Set the link in the <i>About</i> dialog to refer to the company web page.
Section Name: Admin		
Password	String	The configuration dialog contains additional tab names <i>Administrator</i> when running the application using the switch /A. Use this password to unlock this page and modify the application default options.
msg0, msg1, msg2	0-1	Select the default behavior of the corresponding dialog (refer to the <i>Administrator</i> tab). This is used only if the flag <i>Deactivate Dialogs</i> is set.
NoMag	0-1	Setting this flag prevents IdScan from searching for the magnetic reader MagShell900. This shorten the application loading time by 5-10 seconds.
use splash	0-1	Setting this flag display a splash screen when the application loads.
Deactivate Dialogs	0-1	Setting this option prevent information dialogs from showing. Dialogs that require user decision use pre-defined decision as set by the flags <i>msg0-2</i>
Section Name: Scanner Setting		

Resolution	1-600	Set the scanner resolution
JpegQ	11-100	Set the image quality when saving in JPG format. Low quality image result with small image file.
Color	1,2,4	Set the scanner scanning scheme (Gray, B&W, Truecolor)
ScanSize	0-6	Set the scan size scheme.
PassportScanSize	0-1	Set full or MRZ scan size when scanning passports.
CustType	0-1	Set working mode in INCH or MILLIMETER while using custom scan size mode.
Height (inch)	100-1100	Set the scan height value (in milli-inch) while working in Custom Size scans
Height (inch)	100-1100	Set the scan height value (in milli-inch) while working in Custom Size scans
Width (inch)	100-850	Set the scan width value (in milli-inch) while working in Custom Size scans
Height (millimeter)	50-105	Set the scan height value (in millimeters) while working in Custom Size scans
Width (millimeter)	50-230	Set the scan width value (in millimeters) while working in Custom Size scans
AutoScan	0-1	Setting this flag activate the scanner automatically when a document is placed on the scanner's tray.
AutoSave	0-1	Setting this flag save the document image to a designated directory
AutoSaveImmediately	0-1	Setting this flag save the result image(s) and result text file to a designated directory immediately after the scan. Resetting this value perform the save only when the next document is scanned, allowing the user to edit the result text before saving it.
SaveToFile	0-1	Setting this flag save the scanned image to a file when using manual save. Resetting this flag save the image to the clipboard when using manual save.
OpenFromFile	0,1 or 2	Set the image source from scanner, file or magnetic reader.
ReferenceSource		Set the reference source when working in <i>Card Verification</i> mode (see <i>VerifyCard</i> flag).
ManOrientation	0-1	Set the way the images from Side A and Side B are concatenated when saving in manual save mode: the value 0 set the orientation to be vertical (one on top of the other) and 1 set the orientation to horizontal (side by side). This flag is used only if the flag
AutoOrientation	0-1	Set the way the images from Side A and Side B are concatenated when saving in auto save mode: the value 0 set the orientation to be vertical (one on top of the other) and 1 set the orientation to horizontal (side by side). This flag is used only if the flag (see field <i>AutoSaveScheme</i>)

DefaultRotation	0-3	Rotate the scanned image automatically after scan. The rotation is done in multiples of 90 degrees.
Section Name: Automation Setting		
AutoSavePath	String	Set the destination directory of automated-saved images.
Name	String	The file name that is used in auto-save mode
AutoSaveExt	0-5	The file extension used in auto-save mode (bmp, tif, jpg, pcx, tga, png)
AutoSaveFix	0-4	Set the file name source: <ul style="list-style-type: none"> 0. Use ascending file name (based on the value in the field <i>Name</i>) for each new scan. 1. Use the file name in the field <i>Name</i>. Every new scan overwrite the previous file. 2. Use the name extracted from the driver license as the file name. 3. Use the license value extracted from the driver license as the file name. 4. Use the scan time as the file name.
ContCur	Number	Holds the current image number when using ascending file name (<i>AutoSaveFix=0</i>)
AutoSavePathMedic		<u>Identical to <i>AutoSavePath</i> functionality – used for general documents.</u>
NameMedic		<u>Identical to <i>Name</i> functionality – used for general documents.</u>
AutoSaveExtMedic		<u>Identical to <i>AutoSaveExt</i> functionality – used for general documents.</u>
AutoSaveFixMedic		<u>Identical to <i>AutoSaveFix</i> functionality – used for general documents.</u>
ContCurMedic		<u>Identical to <i>ContCur</i> functionality – used for general documents.</u>
AutoSaveScheme	0-2	Set image scanning and saving scheme in auto save mode: <ul style="list-style-type: none"> 0. Single image scan 1. Double sided document 2. Two sides concatenated into one image
ManualSaveScheme	0-1	Set image scanning and saving scheme in manual save mode: <ul style="list-style-type: none"> 0. Single image scan 1. Two sides concatenated into one image
ManualSaveExt	0-5	The file extension used in manual-save mode (bmp, tif, jpg, pcx, tga, png)
ScanView	Number	A value that is used internally by the application.
ManSavePath	String	Set the default destination directory when saving manually.
Section Name: Live Update		
Enable Update	0-1	Activate the live-update functionality
Every App Start	0-1	Check for new updates every time the application starts or according to the schedule.
Day	1-7	The day scheduled for checking for new updates.

Hour	0-23	The hour scheduled for checking for new updates.
Section Name: OCR Save		
EngineType	0-9	Set the current analyzing engine: 0. Driver license 1. 2D barcode 2. General document 3. Passport 4. Magnetic driver license 5. Business card 6. General magnetic card 7. Auto detect between driver license and business card. 8. Bank check 9. 1D barcode
Extract Signature	0-1	Enable signature extraction from the document and saving it to an image.
Extract Face	0-1	Enable face image extraction from the document and saving it to an image.
Export To Web	0-1	Enable exporting scanned image and extracted data to the web or to another application. The precise export configuration is set in the file DATA.TXT.
Extract Full Image	0-1	Enable saving the document image.
SaveRecords	0-1	Enable text extraction from the document and saving it to a text file.
FieldSeparator	0-2	Set the separating character that is used between the different fields in the saved text file: 0. Comma delimited 1. Tab delimited 2. Custom character delimited
CustomChar	1-255	The custom character used to separate between fields in a record in the case the field <i>FieldSeparator=2</i> .
AppendRecords	0-1	Setting this field appends the text records in the text file. Resetting this value cause each new record to over-write the previous record.
SaveFileName	String	The name of the file that holds the text record(s) accumulated from the scanned images.
LastScanFileEngine	0-9	Maintain the last used valid engine.
LastMagEngine	0-1	Maintain the last used valid magnetic engine.
Section Name: Print		
SizePrecent	50-200	Before printing the scanned image the application use this factor to adjust the image size.
Font0-14	Binary	The font properties that is used for printing.
PrintNow	0-1	Setting this field cause the application to print immediately after scan.
PrintCustomerData	0-1	Setting this field cause the application to print the user data along with the image.
PrintLicense	0-1	Print the corresponding data field.
PrintName	0-1	Print the corresponding data field.

PrintAddress	0-1	Print the corresponding data field.
PrintCity	0-1	Print the corresponding data field.
PrintState	0-1	Print the corresponding data field.
PrintZip	0-1	Print the corresponding data field.
PrintIssue	0-1	Print the corresponding data field.
PrintExpire	0-1	Print the corresponding data field.
PrintDOB	0-1	Print the corresponding data field.
PrintTop	Number	The distance from paper top margin to the image.
PrintLeft	Number	The distance from paper left margin to the image.
PrintImage	0-1	Setting this field print the scanned image.
PrintFullImage	0-1	Setting this field print the full scanned image. Resetting this field print the face image only.
PrintDataOnly	0-1	Setting this value print custom data only. Resetting this value prints the custom field label before the data.
ClearCustomData	0-1	Setting this field clears the current custom data before printing it.
Section Name: OCR View		
StateAutoDetect	0-1	Setting this field activate the state auto-detection mechanism when scanning driver license.
CurState	Number	The current scanned state. For full state enum list please refer to the column <i>Document ID</i> in the table printed in IdScan – Appendix A.
Section Name: Id OCR View		
Expanded	0-2	This field defines the opening status of the driver license OCR view (Basic, Details, Custom).
left, top, right, bottom	Numbers	The Driver license OCR view coordinates.
edit0-9	Strings	The label name of the custom fields.
Section Name: Biz OCR View		
left, top, right, bottom	Numbers	The General document OCR view coordinates.
Section Name: Check Data View		
left, top, right, bottom	Numbers	The Check OCR view coordinates.
Section Name: Text Stamp		
Font0-14	Binary	The font properties that is used for text stamping.
Text	String	Text stamp that will be printed on the saved images.
Opacity	0-100	The opacity of the stamped text.
PosVertical	0-2	The vertical position of the stamped text in the document.
PosHorizontal	0-2	The horizontal position of the stamped text in the document.
Color	RGB	Stamp text color
Active	0-1	Setting this flag activate the text stamp feature.
Section Name: Passport OCR View		
left, top, right, bottom	Numbers	The Passport OCR view coordinates.
Section Name: Raw Magnetic View		
left, top, right, bottom	Numbers	The General magnetic card view coordinates.